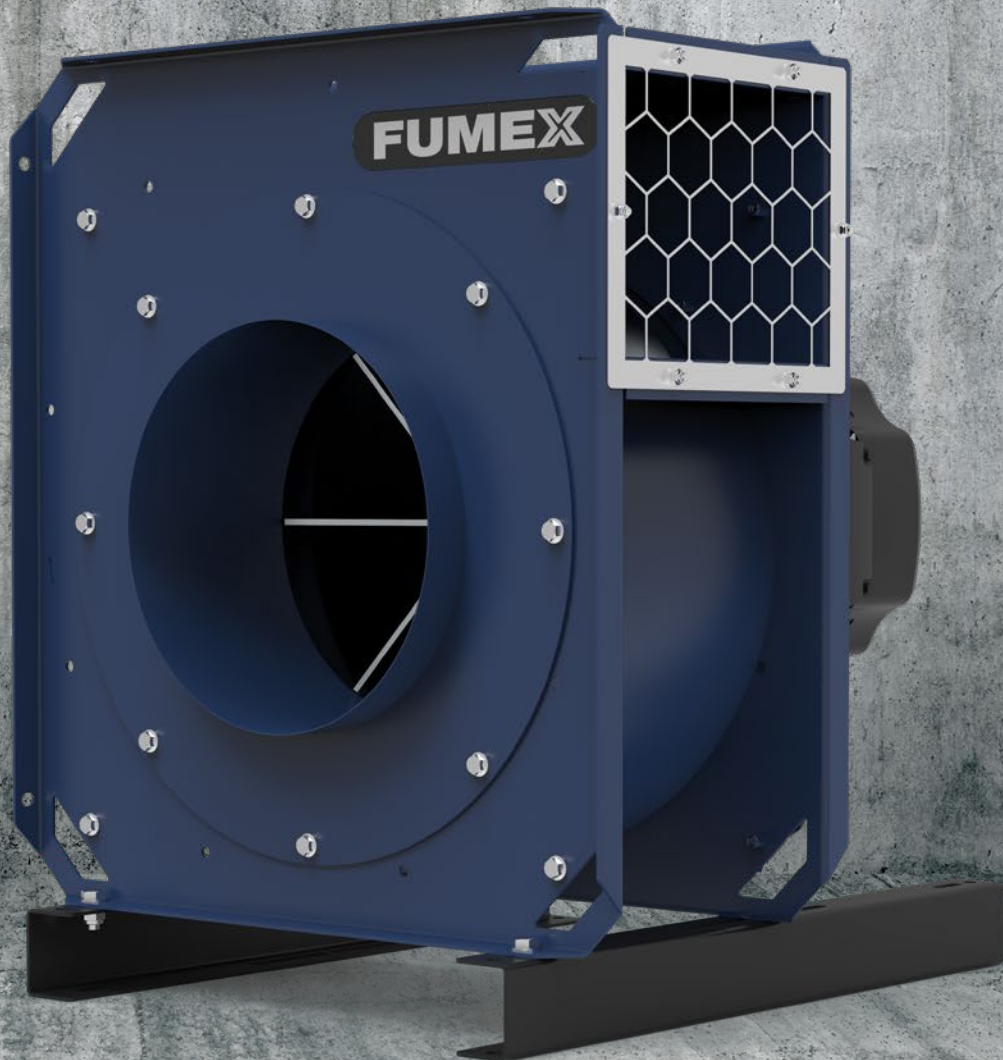
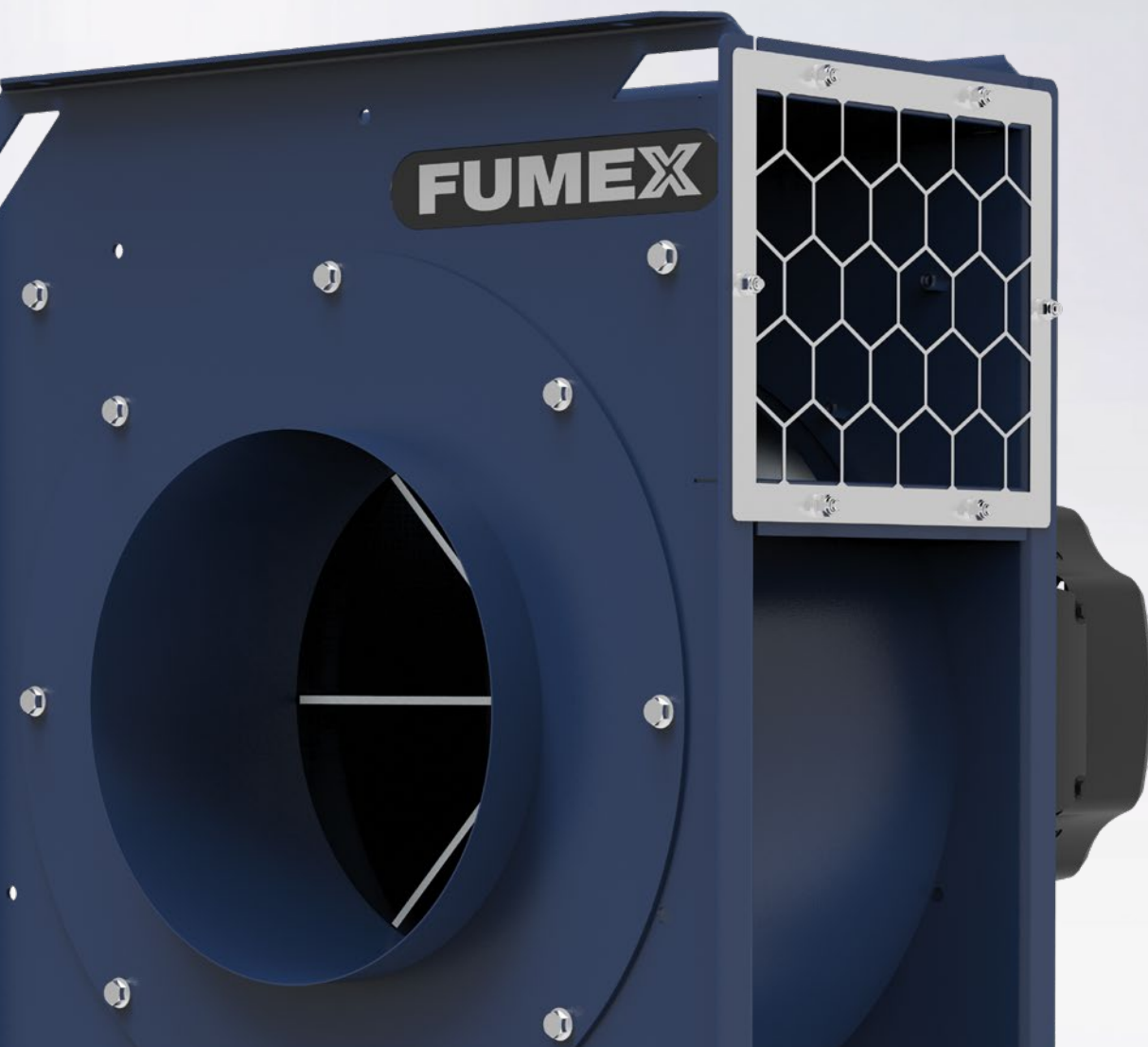




FTE

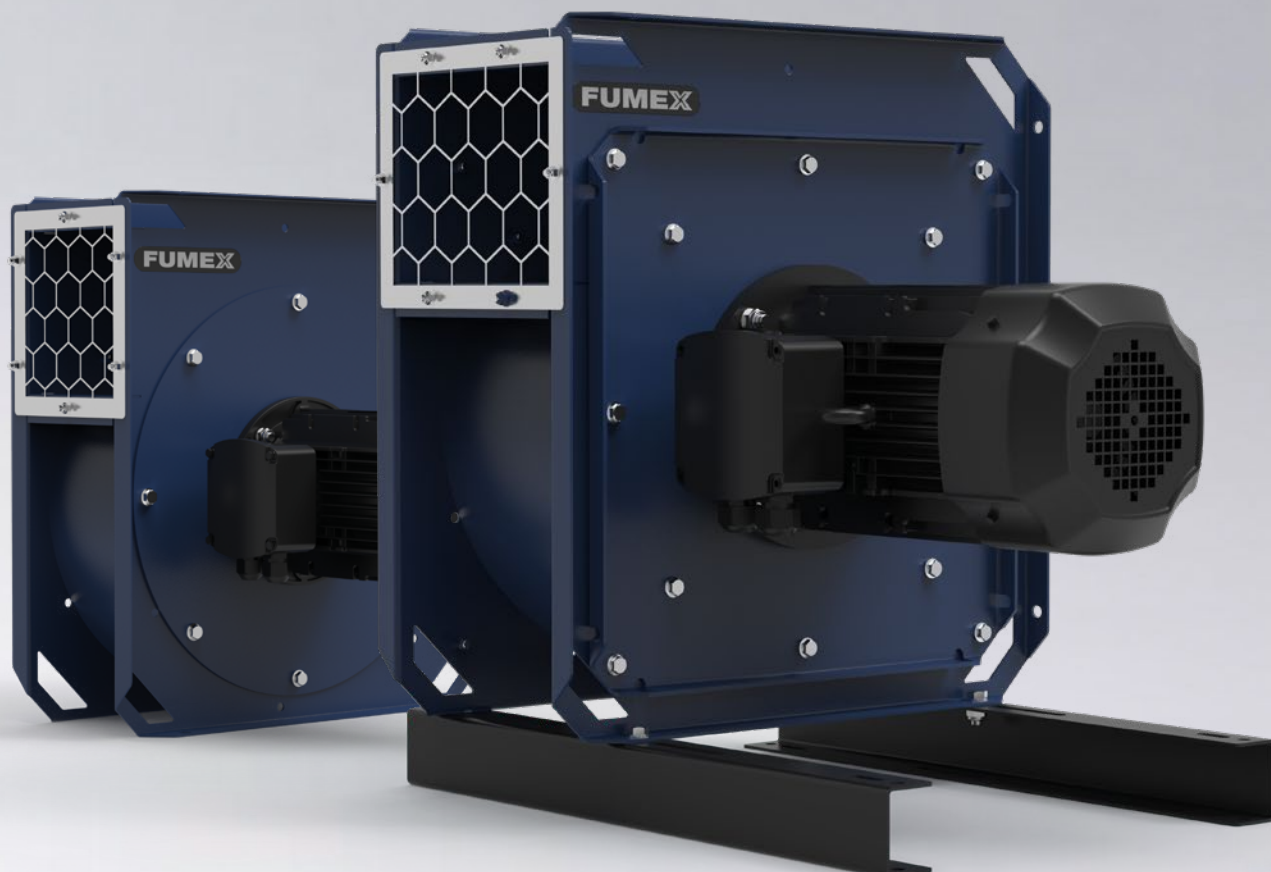
Radial fan for high concentrations of dust-laden air.





Radial fan for high concentrations of dust-laden air

FUMEX FTE is a range of radial fans for use at high concentrations of dust-laden air. Fan housings and impellers are made from heavy-duty steel sheet for industrial use. The welded impeller has straight blades allowing it to handle large amounts of dust with less risk of imbalance that could cause bearing damage. The direction of the outlet is easily changed by turning the fan housing. The fans are optimised for use together with the Fumex product range for fume extraction and control units in industrial environments.



More wide design for handling of larger particles

High-quality sturdy design

Fumex's new fan range maintains the brand's high quality with a modern, practical and robust design that is easy to assemble. The standard delivery version is in exhaust direction LG 90, but both the LG and RD versions can be adapted on installation to the customer's needs (0/90/180/270).

The welded impeller makes the FTE particularly sturdy, which, along with its overall robust design, ensures a long service life.

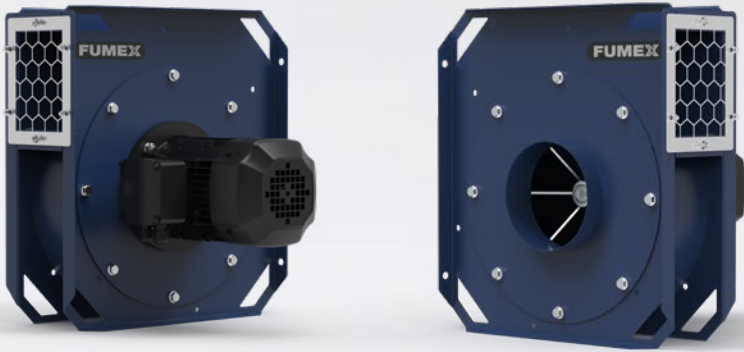
At high dust concentrations

Compared to many other similar models on the market, FUMEX FTE has more space between the blades, providing a more wide design capable of handling larger particles and high concentrations of dust-laden air. This makes the FTE range the right choice for workplaces that, for various reasons, are unable to install filter units in the extraction system.

With five models and airflows up to 6600 m³/h (1830 l/s), Fumex has a wide range to offer. The fan is not designed for potentially explosive or corrosive environments. All models are tested at third-party test bodies.

The FTE range has numerous accessories to make installation easier and deliver greater efficiency in use.

Version

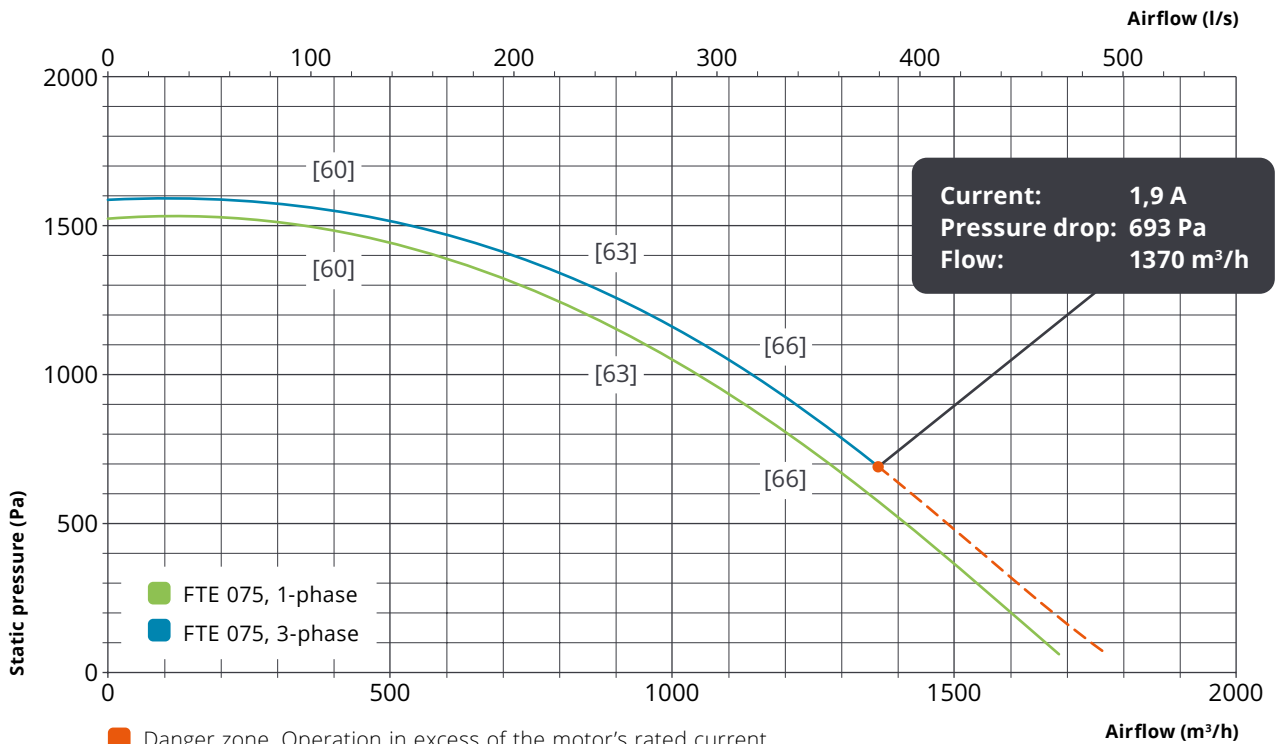


FTE 075

Technical data (1-phase/3-phase)

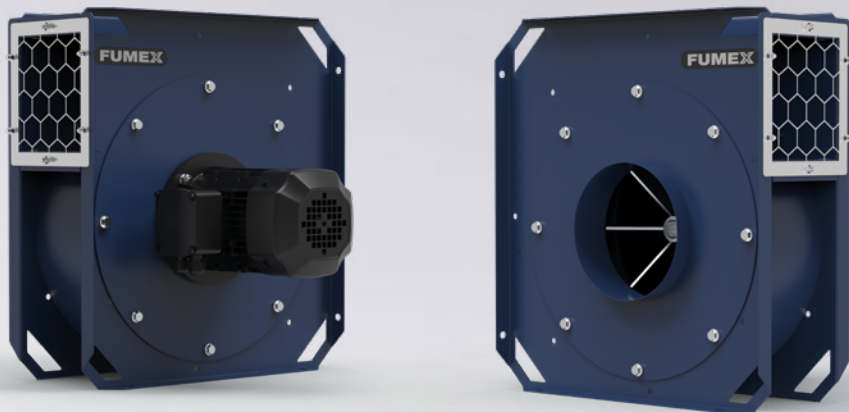
Weight: 26 kg/27 kg
 Voltage: 230 V 1N~/230 V 3~/400 V 3~
 Frequency: 50 Hz
 Power: 0,75 kW
 Rated current: .. 5,8/3,3/1,9 A

Speed: 2890 rpm
 Enclosure class: IP55
 Max. operating temperature: ... 80 °C
 Ambient temperature: -20 °C to +40 °C



Orange square: Danger zone. Operation in excess of the motor's rated current.

[] Ambient sound level (in brackets), measurement performed 1 metre from fan dB(A).

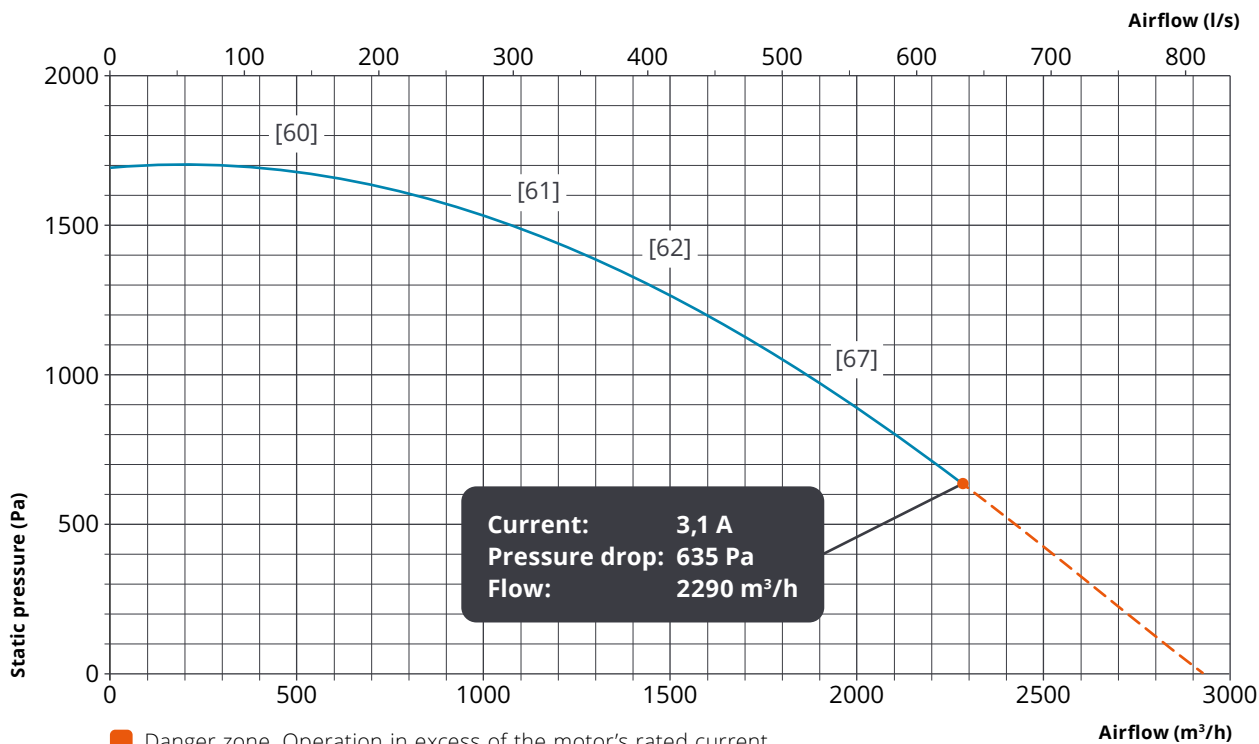


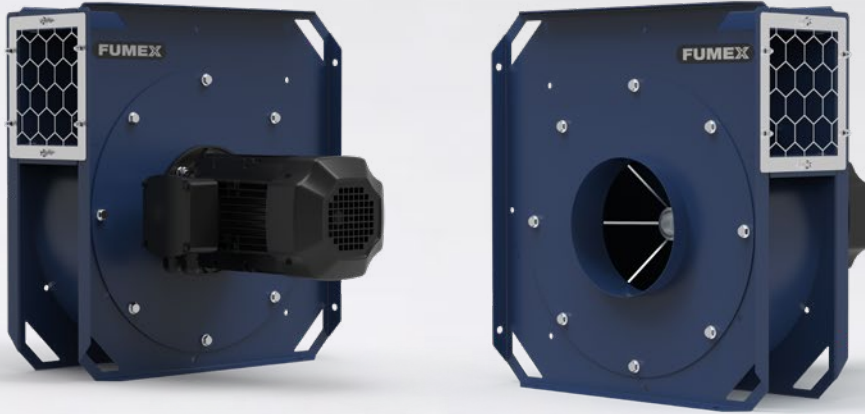
FTE 150

Technical data

Weight: 35 kg
 Voltage: 230 V 3~/400 V 3~
 Frequency: 50 Hz
 Power: 1,5 kW
 Rated current: 5,3/3,1 A

Speed: 2890 rpm
 Enclosure class: IP55
 Max. operating temperature: ... 80 °C
 Ambient temperature: -20 °C to +40 °C

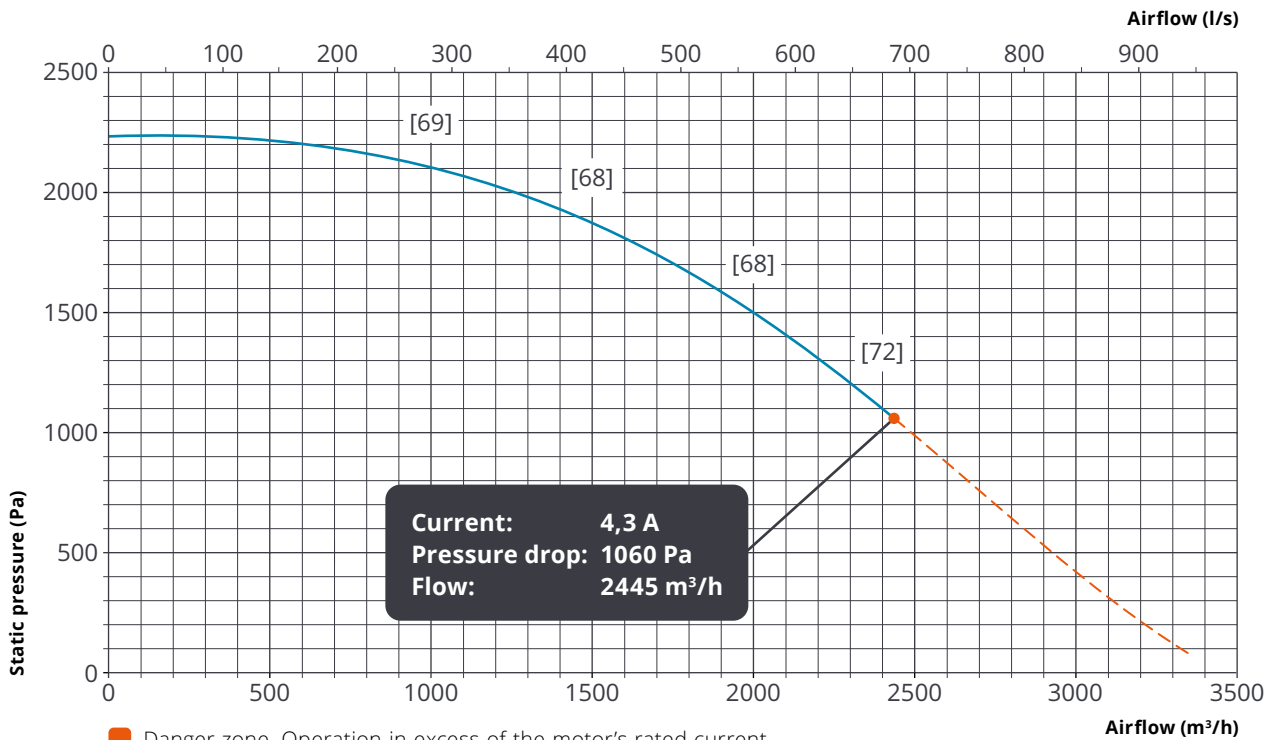


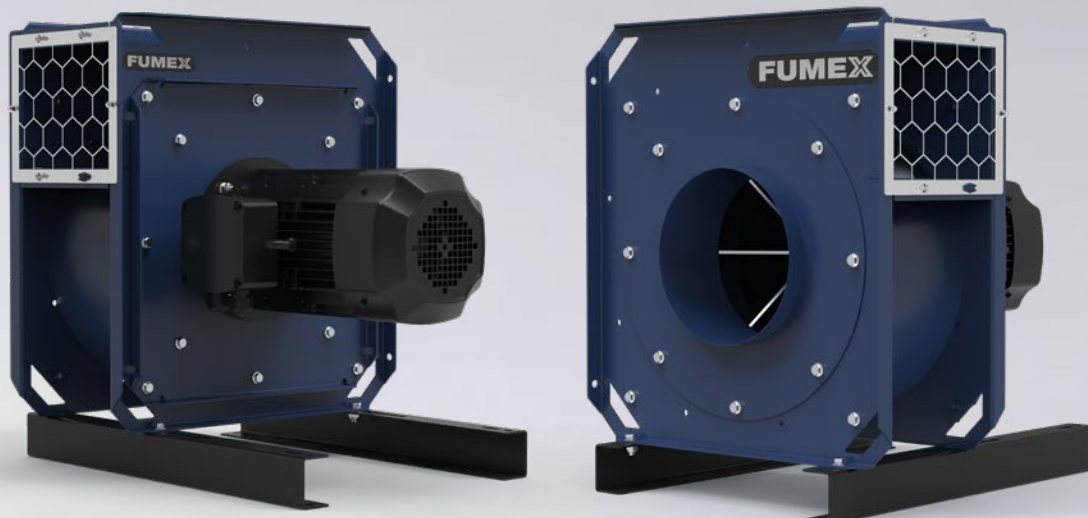


FTE 220

Technical data

Weight:.....	43 kg	Speed:	2890 rpm
Voltage:	230 V 3~/400 V 3~	Enclosure class:	IP55
Frequency:.....	50 Hz	Max. operating temperature:...	80 °C
Power:	2,2 kW	Ambient temperature:.....	-20 °C to +40 °C
Rated current:.....	7,6/4,3 A		

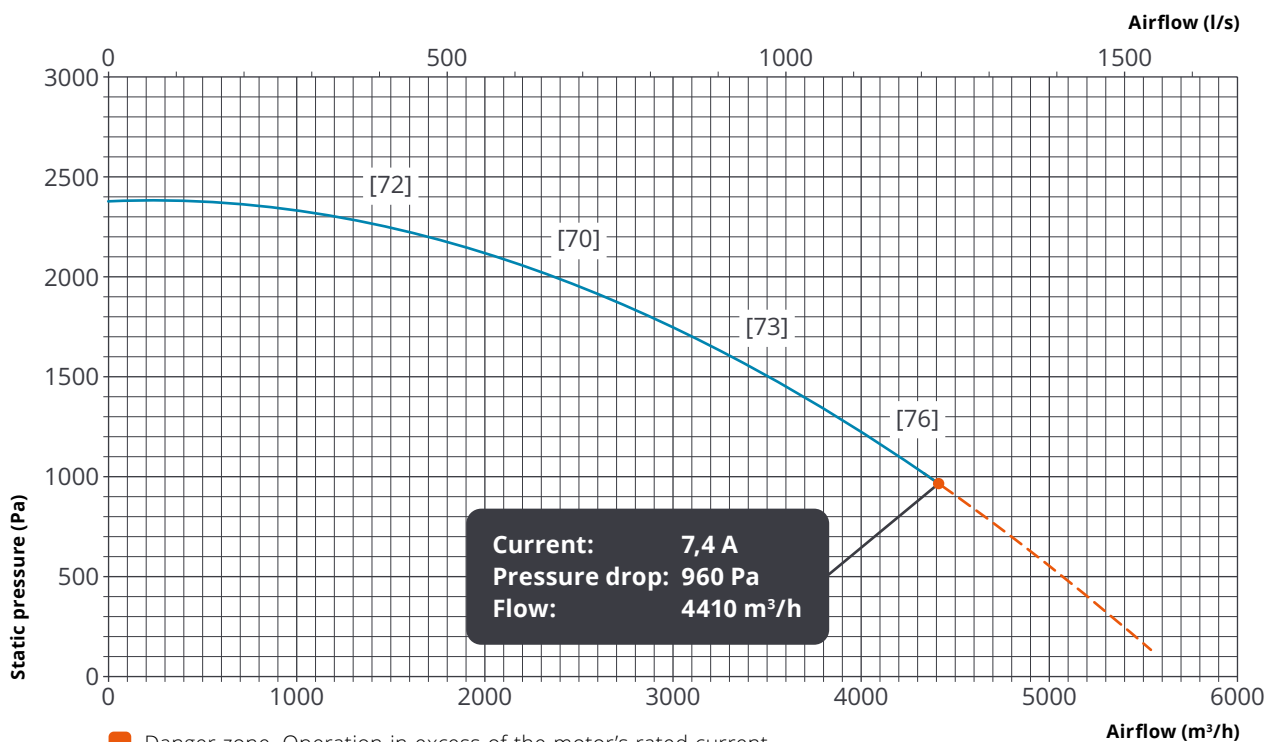


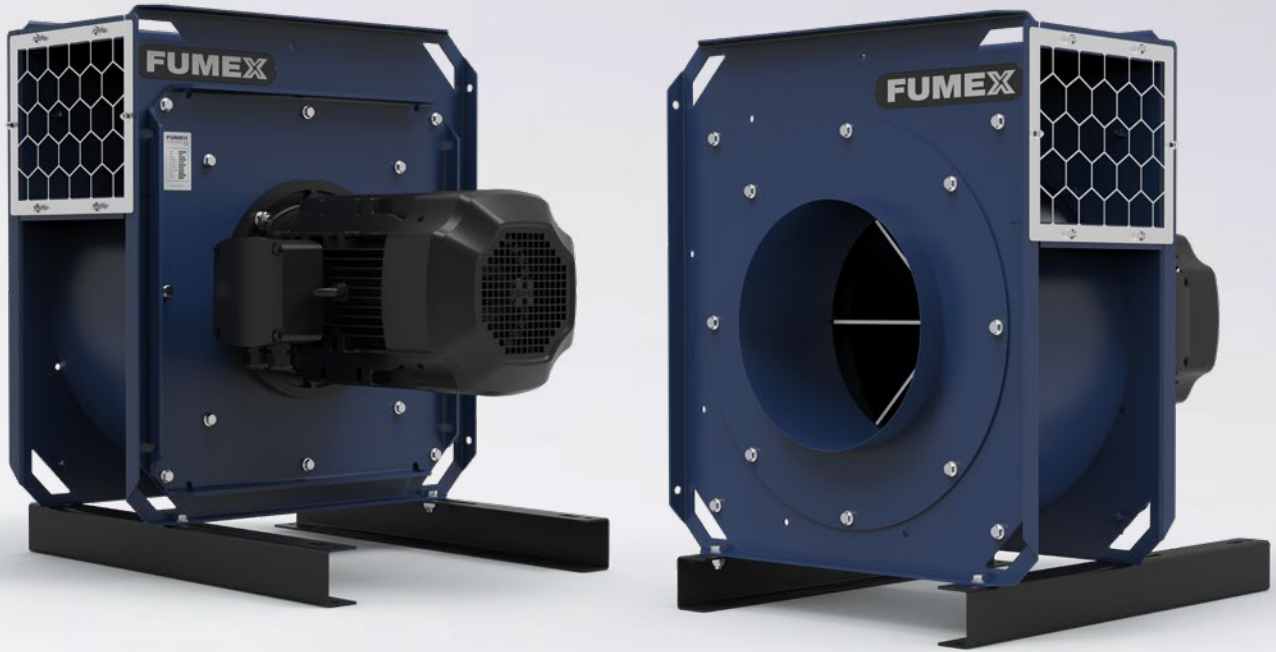


FTE 400

Technical data

Weight:.....	76 kg	Speed:	2910 rpm
Voltage:	400 V 3~/690 V 3~	Enclosure class:	IP55
Frequency:.....	50 Hz	Max. operating temperature:...	80 °C
Power:	4,0 kW	Ambient temperature:.....	-20 °C to +40 °C
Rated current:.....	7,4/4,3 A		



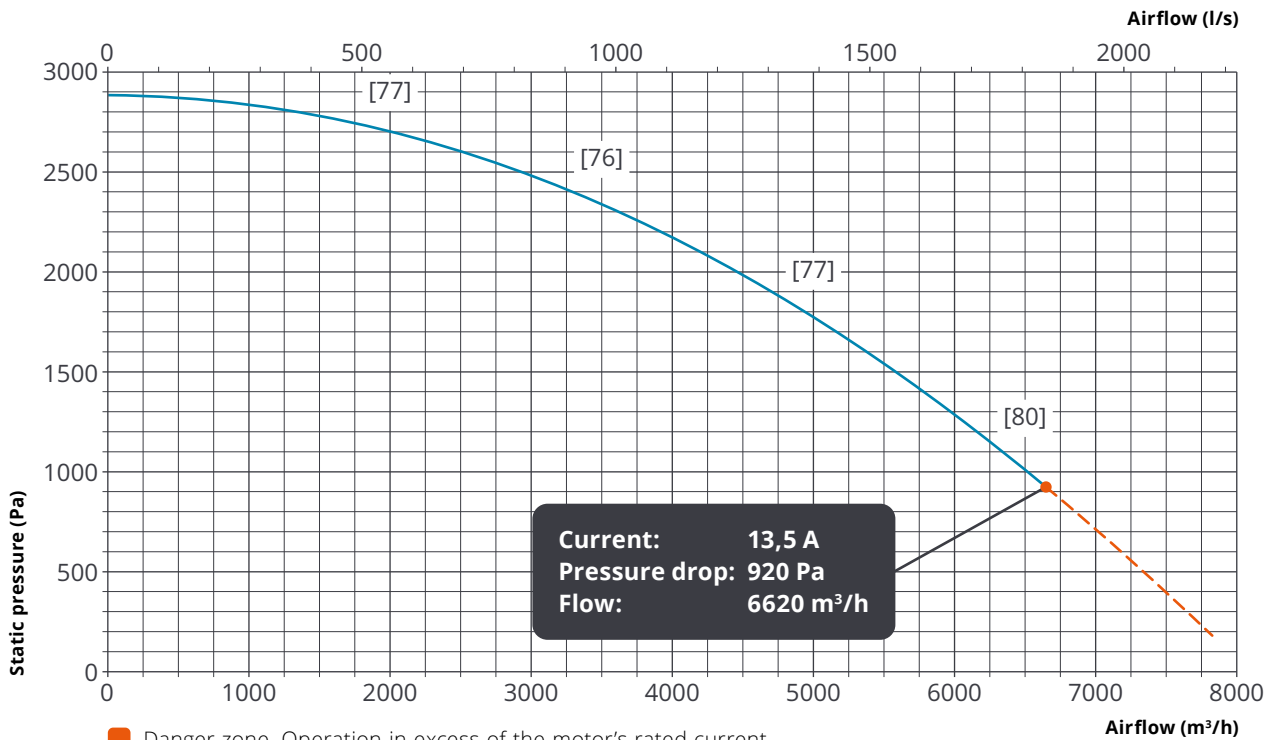


FTE 750

Technical data

Weight: 109 kg
 Voltage: 400 V 3~/690 V 3~
 Frequency: 50 Hz
 Power: 7,5 kW
 Rated current: 13,5/7,8 A

Speed: 2940 rpm
 Enclosure class: IP55
 Max. operating temperature: ... 80 °C
 Ambient temperature: -20 °C to +40 °C

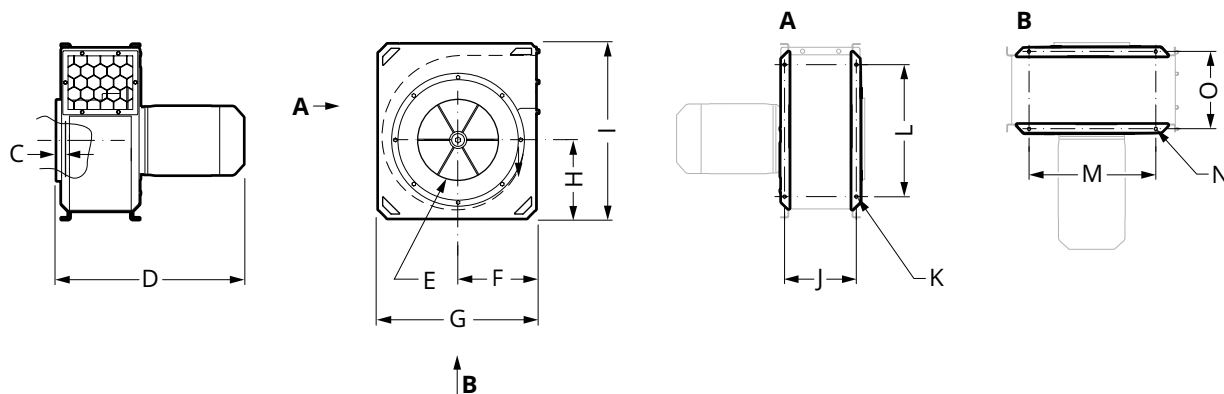


■ Danger zone. Operation in excess of the motor's rated current.

[] Ambient sound level (in brackets), measurement performed 1 metre from fan dB(A).

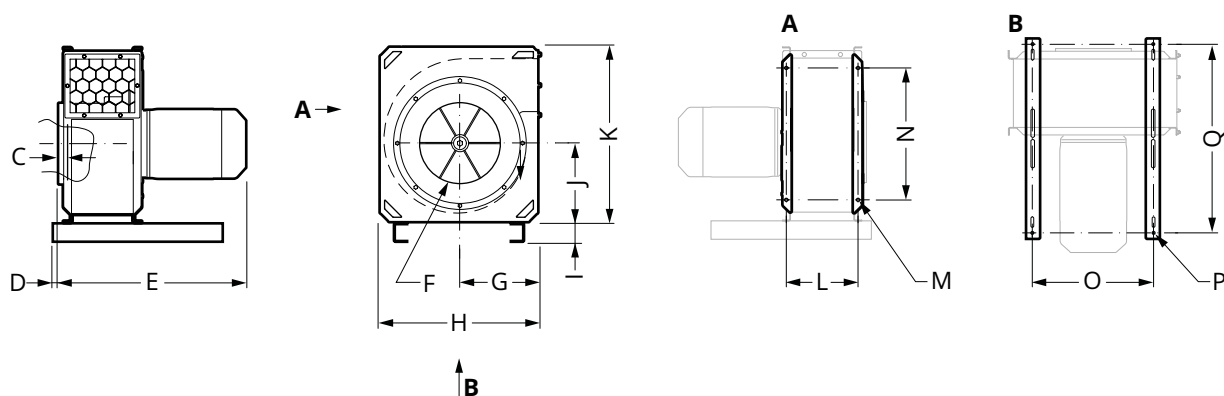
Dimensional drawing (mm)

FTE 075/150/220



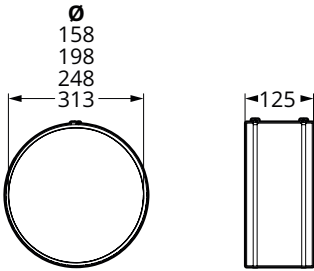
Version	Dimensions (mm)												
	C	D	E	F	G	H	I	J	K	L	M	N	O
FTE 075-1	30	404	Ø158	210	430	208	480	142	Ø11	320	270	Ø11	142
FTE 075-3	30	385	Ø158	210	430	208	480	142	Ø11	320	270	Ø11	142
FTE 150	30	444	Ø198	240	505	245	555	182	Ø11	395	345	Ø11	182
FTE 220	30	512	Ø198	240	505	245	555	182	Ø11	395	345	Ø11	182

FTE 400/750



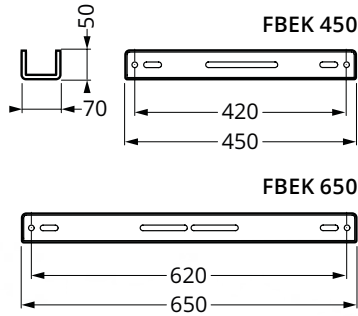
Version	Dimensions (mm)															
	C	D	E	F	G	H	I	J	K	L	M	N	O	P	Q	
FTE 400	30	31	688	Ø248	276	555	70	277	610	257	Ø11	450	395	Ø11	620	
FTE 750	40	20	719	Ø313	302,5	610	70	305	675	277	Ø11	515	450	Ø11	620	

Accessories



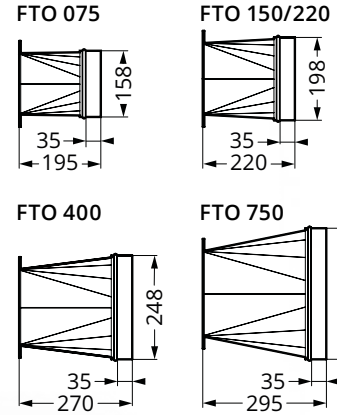
Flexible Duct FDS

For connection to the inlet side, including 2 mounting clamps.



Mounting Rail FBK

For easy and safe installation. (FBK 650 included as standard on FTE 400/750).



Transition FTO

Transition on outlet side to round connection.



Safety Switch SSB/SSB EMC

With lockable toggle. Two M25 bushings included. SSB EMC is copper-sheathed.



Contactor SKO

3-pin contactor with overcurrent relay for manual reset. The overcurrent relay has phase loss protection. Used together with external switches or control.



Motor Protection Switch SMB

3-pin motor protection switch with thermal magnetic release equipped with phase fault protection. Designed for operating and protecting fan motors.



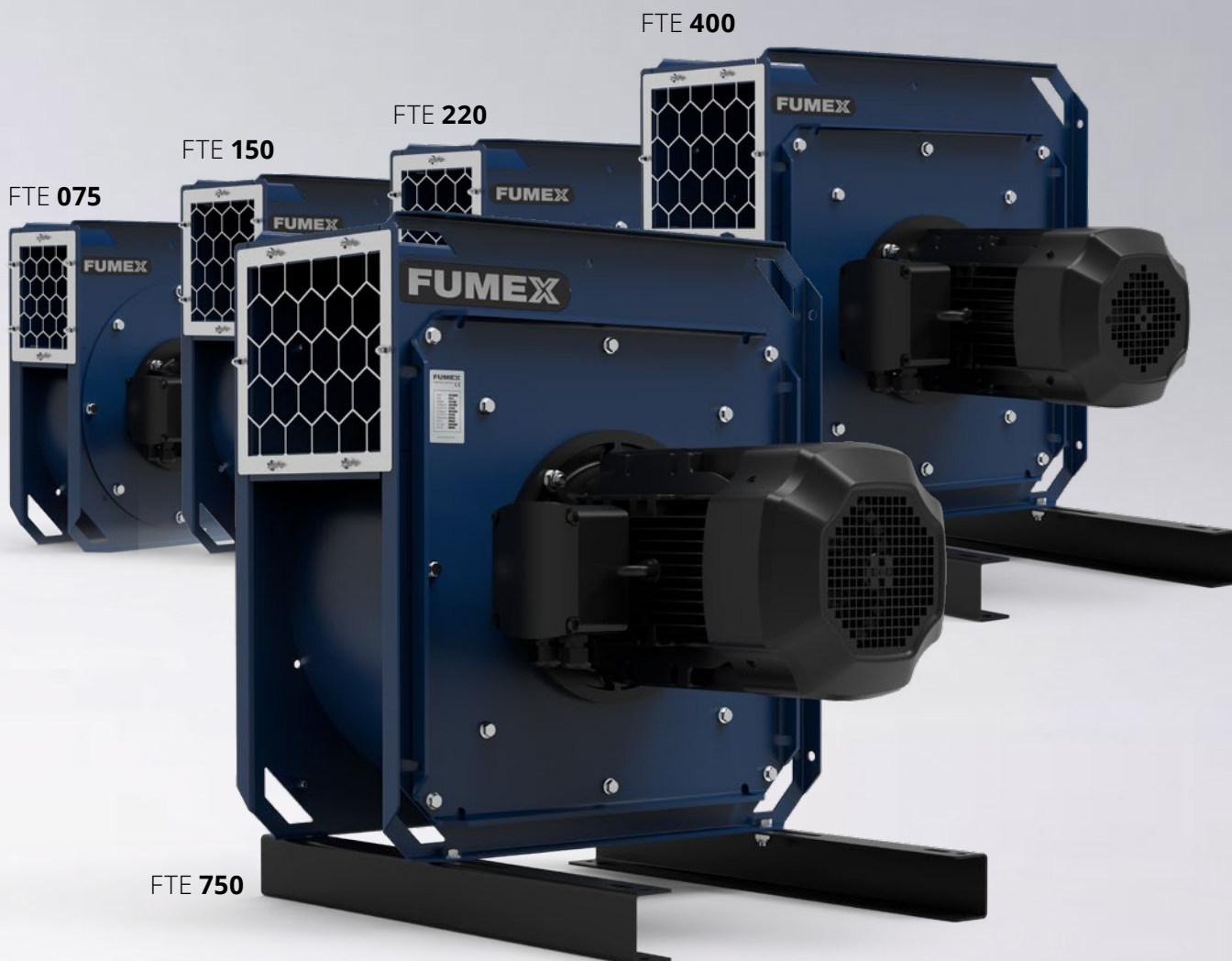
Vibration Damper Kit FBV M10

Kit with four vibration dampers in natural rubber with hardness 60° IRH.

The right version for the right accessories

When ordering accessories for your FUMEX fan, it is important that you specify your fan model at the time of order. Talk to your dealer or directly with Fumex sales staff to ensure the best service.

To meet the requirements of the CE standard, the fan must be equipped with safety switches and overcurrent protection. For speed control, see the separate product sheet for control units.



Specifications

Delivery version

The fan is delivered as standard in version LG 90. Can be adapted on installation to the customer's needs in both the LG and RD versions.



LG 0




LG 90



LG 180



LG 270

 Standardised delivery version

Surface finish

Sheet metal parts: Stainless steel, powder-coated or electro-galvanised.

Production

The FTE range of fans is manufactured in accordance with the following directives and standards:

- Machinery Directive 2006/42/EC
- EMC Directive 2014/30/EU
- EN ISO 12100:2010
- EN 60204-1

EXTRACTION ARMS · VEHICLE EXHAUST EXTRACTORS · FANS · FILTERS · CURTAINS · CONTROLS

FUMEX

Verkstadsvägen 2, 93161 Skellefteå, Sweden • Tel.: +46 910-361 80 • Fax: +46 910-130 22 • E-mail: info@fumex.se
www.fumex.com